

IN PERSON ONLY

_a short film by Tereza Vejvodová
15 minutes - 2025



A man with curly hair, wearing a white t-shirt and white shorts, is standing in a kitchen and drinking from a yellow cup. He is wearing white earbuds. In the background, a mannequin torso is visible, lying on its back on a countertop. The kitchen has white cabinets and a light-colored backsplash. A white kettle is on the counter to the right.

[_to watch the screener please
click here](#)

password:InPersonOnly1124



_synopsis:

A lonely programmer is forced to leave his digital shell to discover that true connection cannot be programmed.

In his carefully controlled world, nothing is alive except for the pet snail which he meticulously looks after. Also, outside his awareness are his mental processes, in the form of ghostly bodies that subtly influence his life.

When an unexpected glitch disrupts his algorithmic reality, he is forced to step out of his comfort zone and confront his repressed anxieties about human contact. An unpredictable encounter challenges the sustainability of his way of life and proves that even in the age of automation, human closeness is irreplaceable.

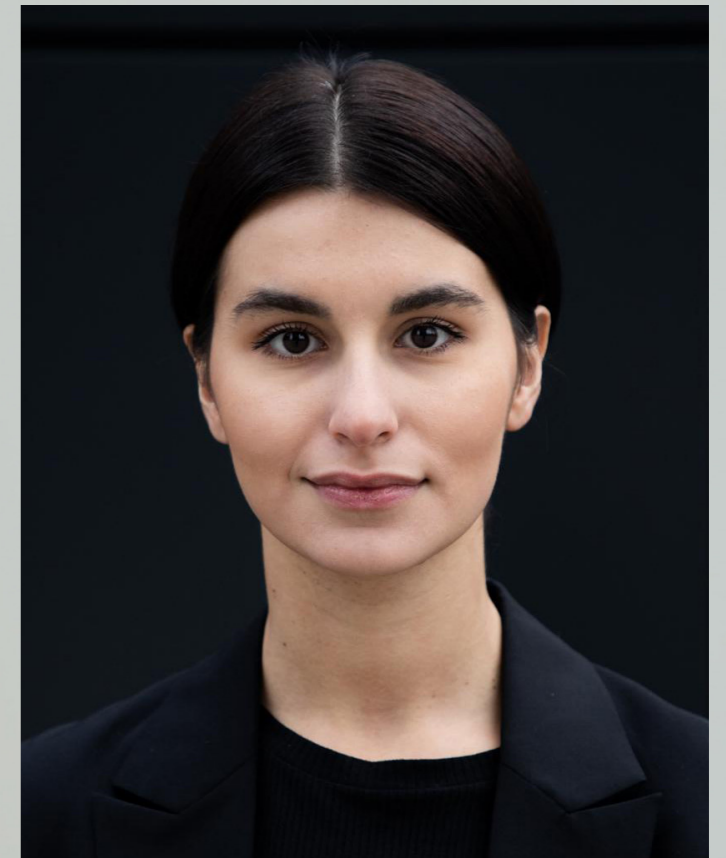


_director's bio

Tereza Vejvodová studied directing at FAMU but also works in multimedia art, including video mapping and visual performances. She perceives film as a synthesis of visual and musical principles, striving for innovative yet accessible audiovisual expression. Her work focuses on mental health, social change, and fundamental human questions.

For the National Theatre production *Land of Body*, she created a 70-minute kinetic film scenography with 12 suspended screens depicting the body as a landscape. A short experimental film of the same name emerged from this work, forming a thematic triptych with *Delimitation* and *Roselyne*, blending movement art with classical drama.

Her feature documentary debut *From the Bottom* premiered in the Czech Joy section at the Ji.hlava International Documentary FF. She is currently completing an international documentary about the Czech women's hockey team and preparing the hybrid film essay *Safe Places*.







PUNK FILM

OLD&RICH

PFX

beep
SOUND
POSTPRODUCTION

**czech
film
fund**

PRA	HA
PRA	GUE
PRA	GA
PRA	G

_thank you for your attention

_contact:

martinaknoblochva@punkfilm.cz

+420 606 945 446